



Management Information: Key to Strategic Planning

Senior Leadership Retreat

presented by: Amy Edwards

Division of Management Information (DMI)

www.dmi.illinois.edu

How can DMI help you?

- With standard web & paper reports
- With custom reports
- With advice on where to find and how to use management data



Why be data-savvy?

- To better manage your unit
- To know what others know about you
- To respond to inquiries
- To avoid reinventing the wheel



Set a bookmark today:

dmi.illinois.edu



I DIVISION OF MANAGEMENT INFORMATION University of Illinois at Urbana-Champaign

Search Go

Home Campus Profile Facts & Figures Dashboards Data Requests Resources About DMI

Student Enrollment 1870 - Today

The graph shows enrollment trends from 1860 to 2020. The y-axis represents enrollment from 0 to 40,000. The x-axis represents years from 1860 to 2020. Three lines are plotted: 'All students' (purple), 'Undergraduates' (red), and 'Grad students' (blue). All three lines show a general upward trend, with a significant increase starting around 1920. 'All students' reaches approximately 40,000 by 2020, 'Undergraduates' reaches approximately 30,000, and 'Grad students' reaches approximately 10,000.

Year	All students	Undergraduates	Grad students
1860	0	0	0
1880	0	0	0
1900	2,000	2,000	0
1920	10,000	10,000	0
1940	15,000	15,000	2,000
1960	25,000	25,000	5,000
1980	35,000	30,000	5,000
2000	38,000	30,000	8,000
2020	40,000	30,000	10,000

Student Enrollment

DMI provides a wealth of current and historical student enrollment statistics and reports for fall, spring, and summer terms. Curriculum, class level, race, sex, residency, home country, and other breakouts are available.

NEWS & UPDATES

Apr 08, 2014
[Strategic Planning Dashboards](#)
Dashboards are now available for the campus strategic plan and all academic schools and colleges plans.

Feb 21, 2014
[Campus Profile Update](#)
FY13 tuition and budget numbers have been added to the Campus Profile.

Feb 04, 2014
[Student Enrollment Reports](#)
10th day Spring 2014 numbers are here!

DMI SYSTEMS (LOGIN REQUIRED)

[Activity Reporting System](#)
Salary histories, teaching assignments, activity data entry.

[Class Rosters for Instructors](#)
Complete, downloadable class rosters, including student email addresses.

[Course Information System](#)
Course, section, instructor data from 1987 to present.

[Proposal Data System](#)
Current grant proposal data, and historical records back to 1996.

[Section Instructor List and Rosters for Staff](#)
Current year section/instructor data and departmental class rosters.

[Tuition Waiver System](#)
Enrollment status, tuition assessed, waivers, and appointments for all students.

PUBLIC INFORMATION LINKS

Student Enrollment

Enrollments by college, department, program, race & gender

Campus Profile

UIUC Factbook: Ten years, hundreds of indicators on multiple topics. Summarized by department, college and campus

Department Information

Departments, executive officers, staff contacts. Includes staff directories and URLs.

UIUC Campus Profile

Ten years of data summarized by department, college and campus:

- Budgets & expenditures
- FTE and headcount staff
- Student enrollment
- Course enrollments & IUs
- much, much more!



UIUC Campus Profile -- Uses

- Compare your unit to similar units on campus
- Look at your unit over time



UIUC Campus Profile

Types of Profiles Available

- Standard: Approximately 400 items
- Strategic:
 - Campus-wide metrics
 - College/Unit-specific metrics
 - Dashboards
- Custom: Over 600 items



[Home](#)[Glossary](#)[Help](#)[What's New](#)[About](#)[Suggestion Box](#)

Profile Type:

[Standard](#)[Strategic](#)[Custom](#)

--- Select a Major Unit ---



----- Select a Department -----



--- Jump to data ---



Change year



Reverse Year Order

[Reset all](#)

Campus Profile for 2013-2014

Unit: Campus Total

Item (numbers link to glossary)	2013-2014	2012-2013	2011-2012	2010-2011	2009-2010	2008-2009	2007-2008	2006-2007	2005-2006	2004-2005
1000 Faculty and Staff -----										
1010 FTE staff on State/TuitFunds	6895.89	6616.95	6583.84	6606.27	7107.23	7191.89	6908.91	6832.93	6667.32	6501.86
1020 FTE Academic Staff- St/Tu\$	4265.56	4095.72	4072.93	4125.20	4350.98	4372.71	4115.42	4017.01	3848.36	3703.48
1030 FTE TenSysFaculty-St/Tu\$	1848.56	1809.80	1821.77	1913.64	1995.89	2027.13	2031.69	2010.74	1979.13	1950.20
1040 FTE Professors -St/Tu\$	805.20	783.92	787.16	825.19	835.50	830.97	831.57	840.16	836.02	847.68
1060 FTE Assoc Prof -St/Tu\$	591.64	576.27	572.57	571.86	590.94	601.34	583.83	555.39	533.28	530.10
1080 FTE Asst Prof - St/Tu\$	408.87	398.65	407.84	451.83	500.36	519.21	546.35	547.51	538.05	499.00
1100 FTE Vis Faculty - St/Tu\$	75.56	84.07	77.01	68.26	85.90	85.91	88.06	92.81	94.81	85.12
1110 FTE Post Docs St/Tu\$	49.36	43.24	38.28	23.72	31.05	29.23	27.78	32.67	28.91	18.70
1120 FTE Other Instr - St/Tu\$	469.19	436.57	372.07	370.77	384.24	357.45	333.28	328.91	297.63	297.88
1124 FTE Clinical FacSt/Tu\$	77.03	66.13	55.64	52.62	53.59	48.62	45.66	41.78	27.63	25.14
1140 FTE Academic Prof-St/Tu\$	1822.96	1722.11	1763.80	1748.82	1853.94	1873.02	1634.62	1551.88	1447.87	1351.57

- Item numbers are links to glossary
- Some data items are “drilldowns”

Campus Profile Drilldowns

Any data item that appears to be a link is drillable

- FTE: get staff lists with appointment info
- Expenditures: see details by fund and account
- Students/degrees: counts by student program, breakouts by gender, race/ethnic, residency
- IUs: breakout by section



Details by Program for Students listed for *Campus Profile* Item 3600 for unit 1B1-KV-KV0-257

[Glossary](#)

Dept	Program (collcurr)	Degree	Major (curriculum name)	Concentration	Total	By Gender		By Residency		By Time		African American			B	
						M	F	IL Res	Non Res	Part	Full	All	M	F	All	A Am
1-257	10KV0439BALA	BALAS	Mathematics		1	0	1	1	0	0	1	0	0	0		
1-257	10KV0439BSLA	BSLAS	Mathematics		320	184	136	289	31	4	316	13	7	6	43	
1-257	10KV0461BSLA	BSLAS	Actuarial Science		245	166	79	200	45	3	242	6	3	3	37	
1-257	10KV1438BSLA	BSLAS	Math & Computer Science		125	114	10	99	26	5	120	4	2	2	19	
1-257	10KV3896BSLA	BSLAS	Mathematics	Graduate Preparation	1	1	0	1	0	0	1	0	0	0	0	
1-257	10KV3897BSLA	BSLAS	Mathematics	Mathematics Teaching Option	26	11	15	26	0	0	26	0	0	0	2	
1-257	10KV8037BSLA	BSLAS	Actuarial Science		4	1	3	3	1	0	4	0	0	0	1	

Custom Profile

Division of Management Information

University of Illinois at Urbana-Champaign



2013-2014 Campus Profile - Campus Total

[Home](#) [Glossary](#) [Help](#) [What's New](#) [About](#) [Suggestion Box](#)

Profile Type: [Standard](#) [Strategic](#) [Custom](#)

Select the units, items (rows), and column order desired and then hit the Submit button above

1. Select unit(s)

All units, depts, colleges
All academic college-level units
Undergraduate Colleges
Units with strategic indicators
Campus Total
Academic Units Total
Agricultural, Cons. & Env Sci
ACES Admin
ACES courses
ACES General

2. Select item(s)

All items
Standard Profile Items, depts, colleges
Strategic Indicators
1000 Faculty and Staff -----
1010 FTE staff on State/TuitFunds
1020 FTE Academic Staff- St/Tu\$
1030 FTE TenSysFaculty-St/Tu\$
1040 FTE Professors -St/Tu\$
1060 FTE Assoc Prof -St/Tu\$
1080 FTE Asst Prof - St/Tu\$

3. Select Column Order

Descending year
Ascending year

Submit

Select Units

Units Selected:

Campus Total
Agricultural, Cons. & Env Sci

Select Items

Items Selected:

FTE Professors -St/Tu\$
FTE Assoc Prof -St/Tu\$
FTE Asst Prof - St/Tu\$

Strategic Profiles

- Campus-wide set of metrics organized by campus goals
- College-specific goals, metrics for each goal, and targets for each metric
- Charts available for many metrics



Strategic Profiles – Campus-Wide Metrics

Metrics that are the same for all units

- Students
- Faculty
- Programs

Selected items are graphed on Dashboard



Strategic Profile – Unit-Specific Metrics

- Organized by goals
- Targets set by the unit
- Primarily college and major unit only, can be extended to depts



Strategic Profile – Unit-Specific Metrics

Division of Management Information
University of Illinois at Urbana-Champaign



2013-2014 Campus Profile - Agricultural, Cons, & Env Sci

Home Glossary Help What's New About Suggestion Box

Profile Type: Standard Strategic Custom

Agricultural, Cons, & Env Sci Jump to charts Change year Reset all

Campus Profile for 2013-2014

Unit: Agricultural, Cons, & Env Sci (1B1-KL XXX-XXX)

Item (numbers link to glossary)	2004-2005	2005-2006	2006-2007	2007-2008	2008-2009	2009-2010	2010-2011	2011-2012	2012-2013	2013-2014	2016 Target
1. Enable first-class discovery research that is purposefully translated into practice											
1603 Tenure Sys Fac Headcount	228	225	221	219	220	214	202	192	183	183	190
1320 FTE TenSys Faculty-All\$	230.22	228.86	222.01	219.78	222.73	219.40	207.29	195.13	184.60	183.07	190.00
2573 G&C Federal Exp (000)	16518	16662	16415	14809	14463	14017	14658	17591	17391		18000
2574 G&C Illinois Exp (000)	11492	10289	14071	13995	14100	13606	9826	8509	8585		8500
2575 G&C Pvt & Othr Exp(000)	6523	7178	7821	7784	9829	10457	11654	11374	10573		12000
2617 Land Grant App Exp(000)	16743	16936	18134	20104	17048	15669	14422	17912	16759		17000
2685 G&C Exp - PI home dept(000)	31938	31571	37836	41630	41085	42712	40398	44462	43966		45600
2762 PI G&C exp/fac FTE	138727	137950	170425	189415	184459	194676	194887	227858	238171		240000
2772 Sponsored \$/FTE Fac (000)	128	122	133	121	120	121	146	184	174		174
2770 Sponsored Project \$ (000)	29399	28005	29493	26669	26704	26489	30184	35905	32076		33000
2. Prepare globally competitive undergraduate, graduate, and mid-career students											
4340 Ugrad Advisees/Faculty FTE	10.7	10.8	11.3	11.3	11.1	11.3	11.9	13.4	15.2	15.8	15.4
KL13 External incoming transfers	104	101	109	72	87	145	112	168	169	164	180
KL15 Internal incoming transfers	50	185	203	261	266	226	209	187	216	199	225
3940 % International grad	34.2	35.1	34.6	34.8	38.3	40.2	39.5	36.5	36.6	36.0	35.0
KL21 % Graduates employed	57	55	48	49	39	46	49	45	49		55
KL23 % Going to Grad/Prof School	25	32	33	30	36	30	30	26	26		30
KL25 Average salary, BS graduates	32527	35527	36920	39945	41240	37200	41423	39341	43526		46000
4044 Total Advisees - ugrad	2309	2326	2393	2385	2387	2424	2418	2544	2752	2863	2900
4046 Total Advisees - grad & pr	568	505	522	514	525	551	595	610	616	610	625
5390 Extramural IUs	1402	1178	1323	1236	1849	2405	2889	2860	1908		2000
3660 On-campus Undergraduates	2253	2268	2344	2339	2336	2350	2323	2440	2637	2770	2800
3781 % International Ugrads	1.6	1.5	1.7	2.0	2.6	4.8	6.4	8.0	9.2	8.1	9.0
4088 Undergraduate Minors			40	51	64	96	99	102	233	311	400
4332 Undergrads /Faculty FTE	10.4	10.5	11.0	11.1	10.9	10.9	11.4	12.8	14.5	15.3	14.7
4570 Freshman Retention Rate (%)	94.2	94.0	92.1	91.8	94.2	93.3	94.3	93.4	94.9	93.8	94.0
4620 Six-year graduation rate	81.5	84.2	80.6	83.3	84.2	84.1	83.6	82.5	87.6		88.0

Strategic Dashboard

UNIVERSITY OF ILLINOIS AT URBANA-CHAMPAIGN



Strategic Planning Dashboards | Presented by the Division of Management Information

Select a College/School Dashboard: Campus Strategic Plan



Foster scholarship, discovery, and innovation

Provide transformative learning experiences

Make a significant and visible societal impact

Steward current resources

Goal I: Foster scholarship, discovery, and innovation

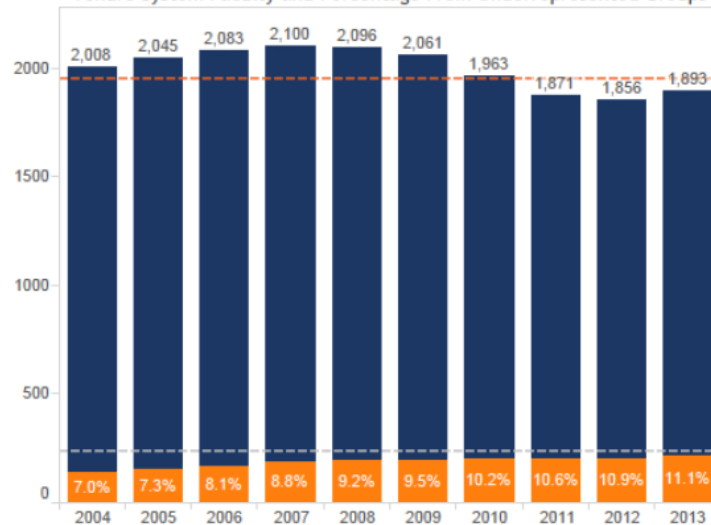
Select a College/School: Campus Total

----- 2016 Targets (where available)

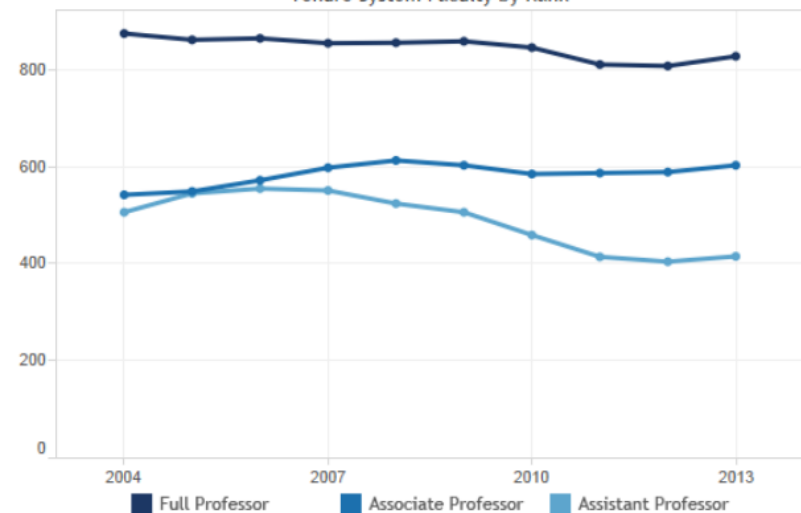
Note: Some graphs are unavailable at the college/school level

Faculty Headcounts

Tenure System Faculty and Percentage From Underrepresented Groups



Tenure System Faculty by Rank



Research Expenditures

Sponsored Research

Sponsored Research per Faculty Member

Total Research and Development



College/School Dashboards

UNIVERSITY OF ILLINOIS AT URBANA-CHAMPAIGN



Strategic Planning Dashboards | Presented by the **Division of Management Information**

Select a College/School Dashboard: Agricultural, Consumer and Environmental Sciences ▼

▼ ◀ Enable first-class discovery research Prepare globally competitive students Be the preferred source of knowledge Steward and invest resources Create an inc

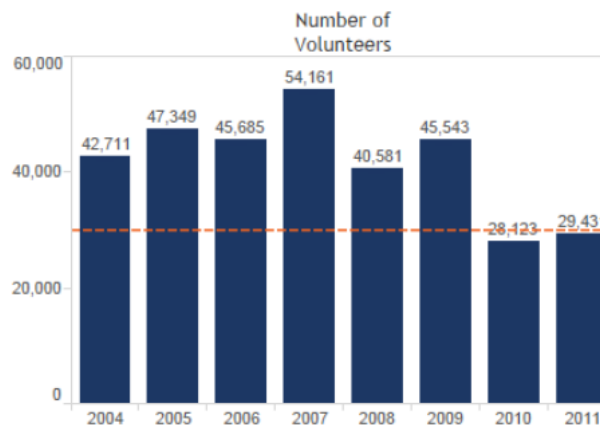
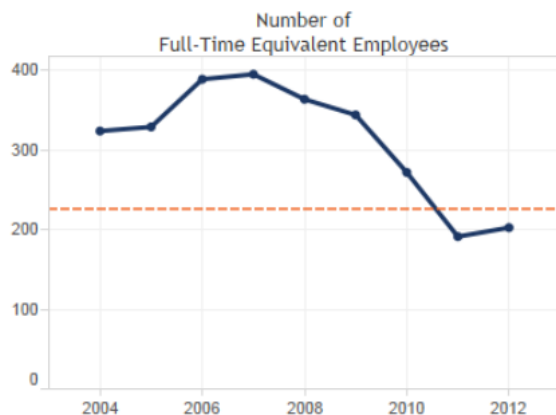
College of Agricultural, Consumer and Environmental Sciences Strategic Metrics

Goal III: Be the preferred source of knowledge that informs decisions, transforms lives, and deepens relationships

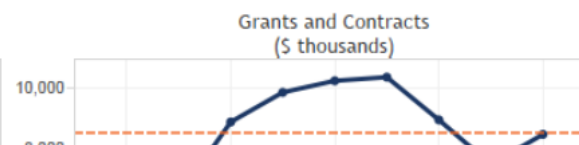
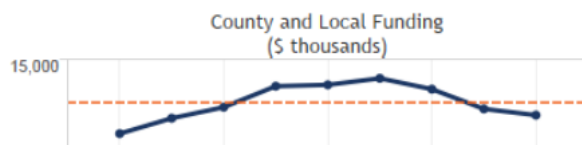
----- 2016 Targets (where available)

University of Illinois Extension

Employees and Volunteers



Funding and Research



Custom Charts

Division of Management Information
University of Illinois at Urbana-Champaign

2013-2014 Campus Profile - Campus Total

Home Glossary Help What's New About Suggestion Box

Profile Type: Standard Strategic Custom

---- Jump to charts ----

Select the unit and items (rows) then hit the Submit button above

1. Select unit 2. Select up to 3 items 3. Select range 4. Select chart type Submit

Campus Total
Academic Units Total
Agricultural, Cons, & Env Sci
ACES Admin
ACES courses
ACES General
ACES Info Tech & Cmc Svcs
Agr & Biological Engineering
Agr Animal Care and Use Prg
Agricultural & Consumer Econ

1000 Faculty and Staff -----
1010 FTE staff on State/TuitFunds
1020 FTE Academic Staff- St/Tu\$
1030 FTE TenSysFaculty-St/Tu\$
1040 FTE Professors -St/Tu\$
1060 FTE Assoc Prof -St/Tu\$
1080 FTE Asst Prof - St/Tu\$
1090 FTE Other ten - St/Tu\$
1100 FTE Vis Faculty - St/Tu\$
1110 FTE Post Docs St/Tu\$

10 Years
Bar

Select Units

Units Selected:

Select Items

Items Selected:

Selecting from the lists: most current browsers interpret keystroke and mouse action combinations as follows:

Click: Selects or deselects one item. All previously selected items are now "deselected".
Shift-click : selects or deselects all items between the previous selection and the current mouse position.
Ctrl-click: selects or deselects a single list item without affecting the other selected items.

Division of Management Information
University of Illinois at Urbana-Champaign

2013-2014 Campus Profile - Campus Total

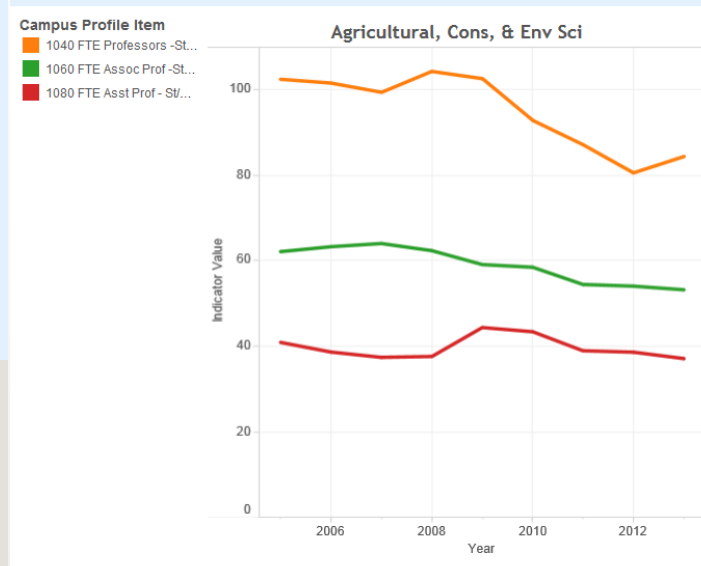
Home Glossary Help What's New About Suggestion Box

Profile Type: Standard Strategic Custom

Drilldown to Unit Select Range Chart Type Select Item 1 Select Item 3

Custom Chart (Beta)

Line



Share

Share your perspective

Export to PDF



Course Information System

- Sections, IUs, Instructors by
 - “Offering” department
 - “Paying” department
 - “Controlling” department
- Data back to Fall 1987
- Deals correctly with renumberings, crosslistings, new subject names



Course Information System

Example Reports

- All courses one year
- All years for one course
- Selected courses and selected terms
- All courses, all years for one faculty member
- Six – Ten reports
- Anomaly reports



Other Information Resources for Managing the Instructional Mission

- Student Enrollment Reports
“Official” 10-day Enrollments
- Consolidated Class Rosters
- Section Instructor List/Dept Rosters



Information Resources for Managing your Students & Tuition Revenue

Tuition, Waiver and Appointments System

Tuition charges and waivers for undergraduate & graduate students enrolled in your unit by term.

Includes residency, tuition schedule, range for each student, plus all waiver-generating appointments



Who's Who at the UI: Departments and Executive Officers

- All departments in Urbana
- Unit heads & other contacts
- Staff directories
- URLs of each unit



Information Resources for Managing the Research Mission

Proposal Data System

All proposals submitted for grants/contracts
1996 to present. Searchable by:

- Investigator
- Sponsor/agency
- Dept or college
- Keyword



Additional Information Resources for “Managing” Your Faculty

- Course Information System:
 - Teaching Histories
- Activity Reporting System:
 - Salary Histories from FY89
 - Cost Sharing Commitments



Other Information Resources Available to Units

- Banner
- Decision Support:
 - Eddie/Business Objects
 - Standard reports
 - Point & click report generation
- Enterprise Data Warehouse (EDW)
 - for programmers



A Note on Data Quality

Garbage in → Garbage out

The data we work with originates in the departments. Please make sure your staff members know how important it is to verify the data are entered correctly.



A Note on Data Security

As EO, you are responsible for the uses of data in your unit. Make sure your staff know and obey the policies and laws on data privacy, especially with student data (FERPA).



Towards A Data-Driven Decision-Making Culture

More and more, decisions on campus are driven by data. Take the time to understand the sources of data you have available and use them !!!



Web Systems Available

- Activity Reporting System
- Campus Profile
- Course Information System
- Departments & Executive Officers
- Proposal Data System
- Section Instructor List
- Student Enrollment Reports
- Tuition Assessment/Waiver/Appt Reports



Let DMI Help

Call (333-3551) or email (dmi@illinois.edu)

- Navigation through our site
- Understanding the data
- Where to find data
- Special reports needed



?? Questions ??

